

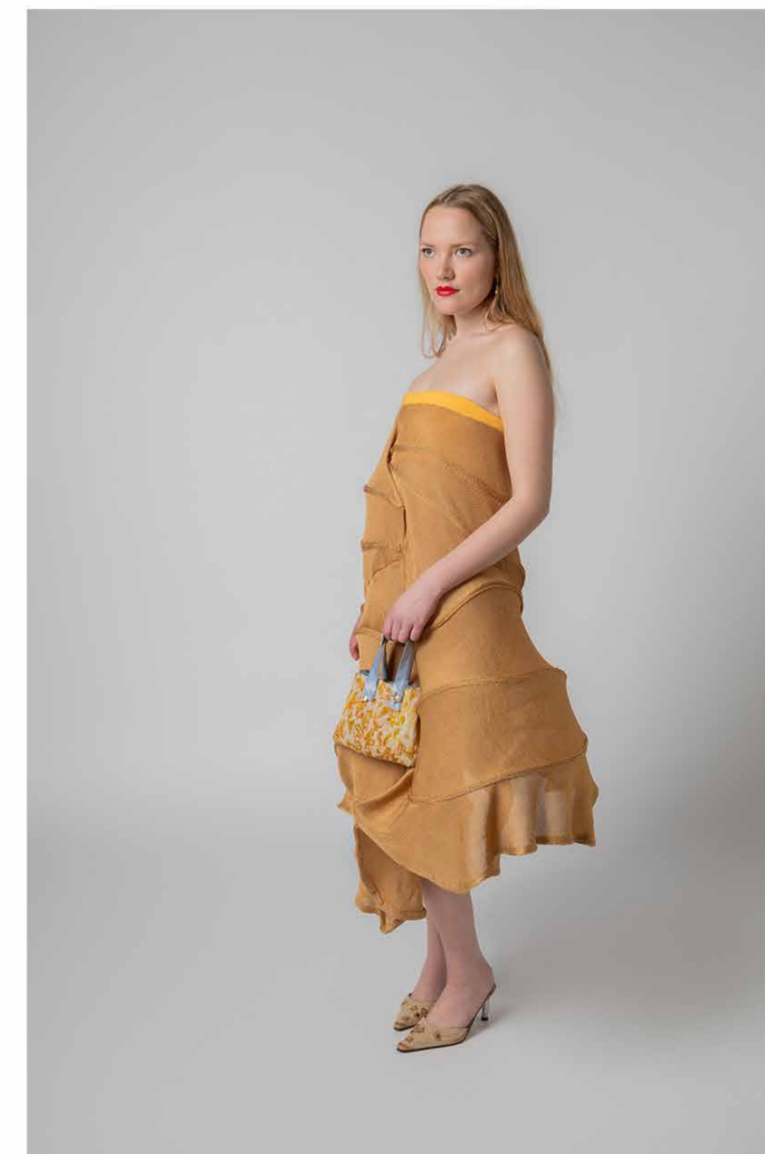
LOOK BOOK

'Beneath The Lace'

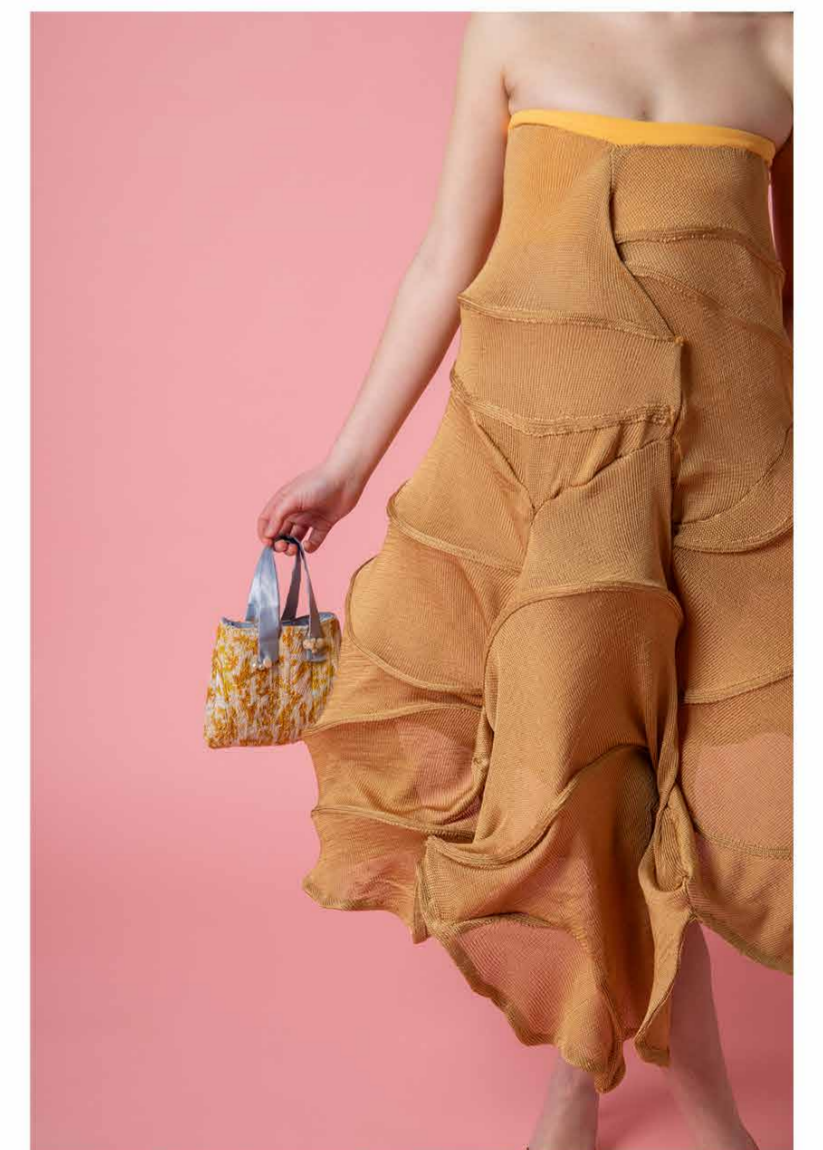




Gold Knitted Dress



This look is a 7 gauge gold rayon knitted dress, with wire channels running throughout to create this organic silhouette. A knitted elastic band provides support around the body. Styled with a mini knitted bag, made of knitted material beamised to silk/wool as seen in the suit, embellished with pearls.



Knitted Coat



The knitted coat is a mixture of four different yarns, two shades of blue merino and two shades of wool bouclé yarn. For the wire structures on the shoulders wool bouclé yarn is mixed with a sparkly silver yarn to create a sheen. With exposed princess seams running down the curves of the shape to accentuate its rounded figure.





The knitted suit is made up of two types of fabric. The knitted element is cream cotton yarn paired with two shades of gold yarn used in a punch card technique to create this pattern. This 7 gauge knitted fabric is then beamised onto blue wool/silk to create a strengthened knitted fabric. Exposed seams highlight the two fabrics and frame the curvaceous shape. Paired with a pink linen bra, knitted on the 10 gauge, in a ribbed knit to form around the body.



Knitted Suit & Knitted Bra



Knitted Skirt and Ribbed Top



The pink dress is made from fine pink linen yarn. The top is a ribbed knit so it hugs to the body shape. The skirt is made up of individual knitted panels cut into organic shapes, small knitted strips are then linked to these to thread wire through stretching the linen creating these undulating shapes. Across the dress metallic foiling highlights the curves and silhouette. To support the skirt a cotton poplin crinoline has been sewn into the knitted waistband of the dress.



Promotional Images

