



Chapter 1

Concept

Everyone has their fragile period, the death of my family members and the new environment of living abroad always make me feel lonely and empty. Eventually, I experienced a sense of lacking belonging and security, I always miss a specific time in my childhood, and the memories of the past pull at me, making me constantly reminisce and close my heart. These childhood memories become a haven for me to escape reality.

In this project, I explore the human quest for belonging, dividing it into coexistence (a sense of self-worth) and spatiality (an instinct triggered by loneliness to seek refuge). Through my innovative clothing designs, I visually express the lack of belonging in society.

Development Board



Based on shoulder space

The most active part of the human body is the limbs, so I made some extra space attempts for the shoulders or armpits. With the lifting of the shoulders, all parts will naturally gather at the point of force. Then release the raised point, and the naturally falling shoulder forms an additional spatial structure.

Development Board



Extra space on both sides

By pulling and pulling, some stacking structures are formed in the space on both sides of the human body.



Development Board



“Chapter — 2”

Research Board



People are used to getting security from small spaces, because small spaces are easier to control, and tightly wrapped around people's bodies makes people feel safe.

I tried to establish a certain interaction between my body and my clothing, with the movement of my body, the structure would open or close, and I would represent the triangular structure of the gap by folding it into different positions.



Research Board

I have added the same extra space on both sides of the human body, pulling up the extra space through different angles and asymmetric forces, and then letting it fall naturally. Afterwards, he fixed the points where wrinkles formed after falling, forming some stacked structures on both sides of the human body.



Development Board

Development Board

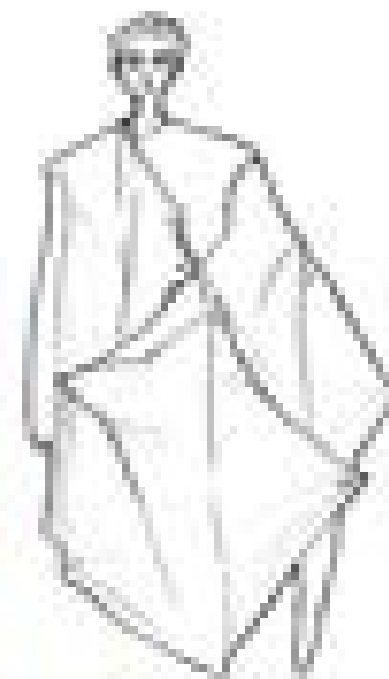
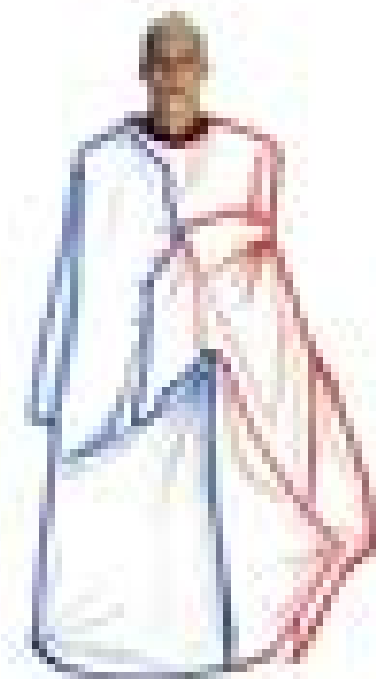
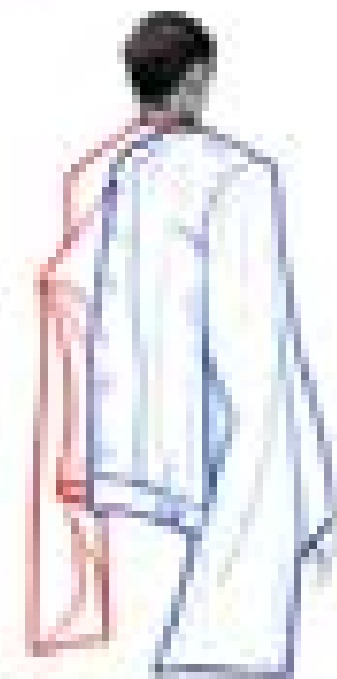
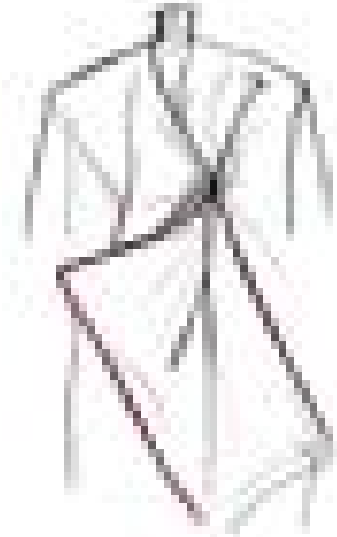


Development Board



After filling the black and white spaces on both sides of the experiment, some three-dimensional structural spaces were generated, which can be opened or closed, providing additional movement space based on the human limbs.

In closing this part of the space, I attempted to fold the three-dimensional structure backwards to form a folded and stacked structure.



Development Board



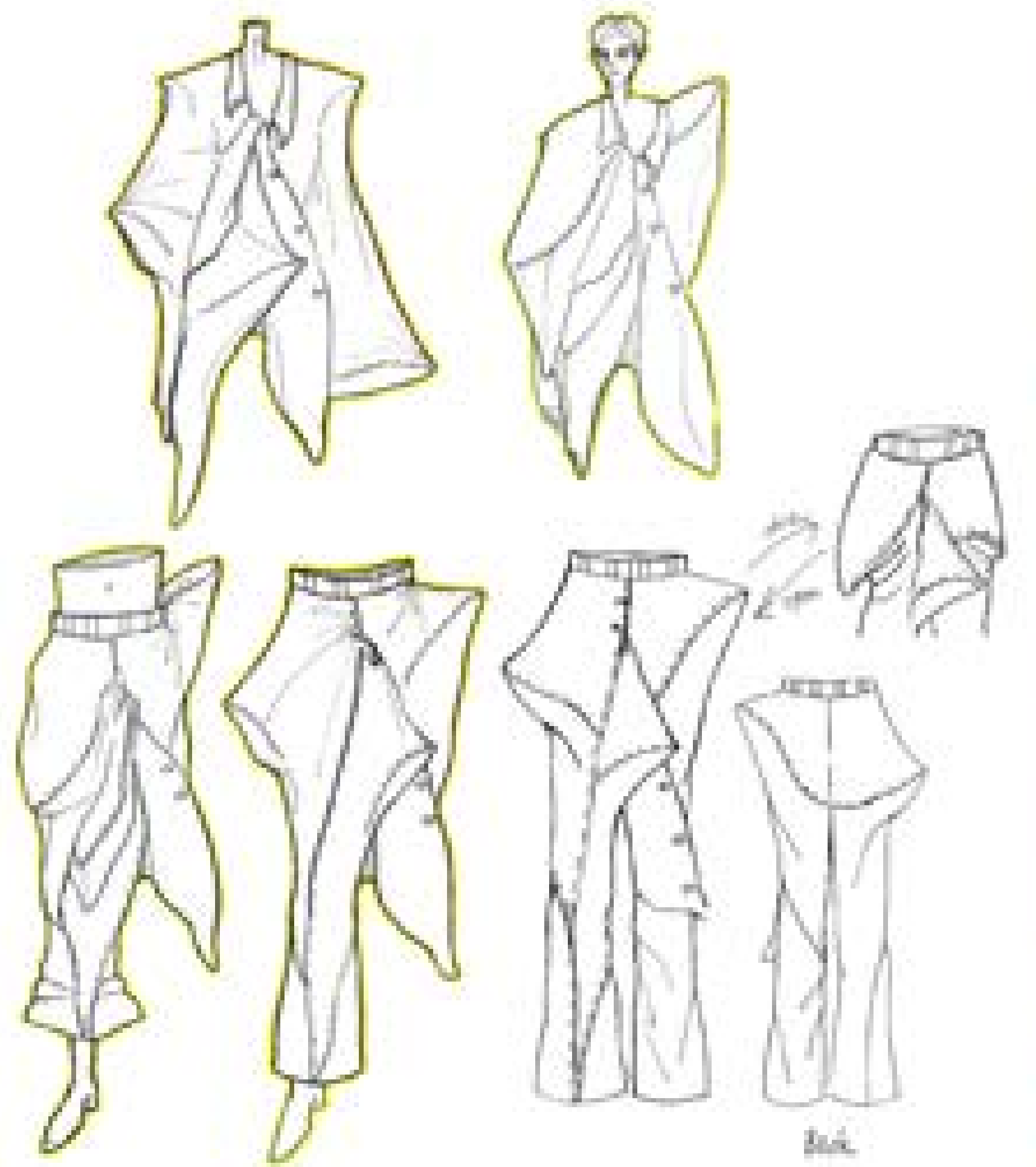
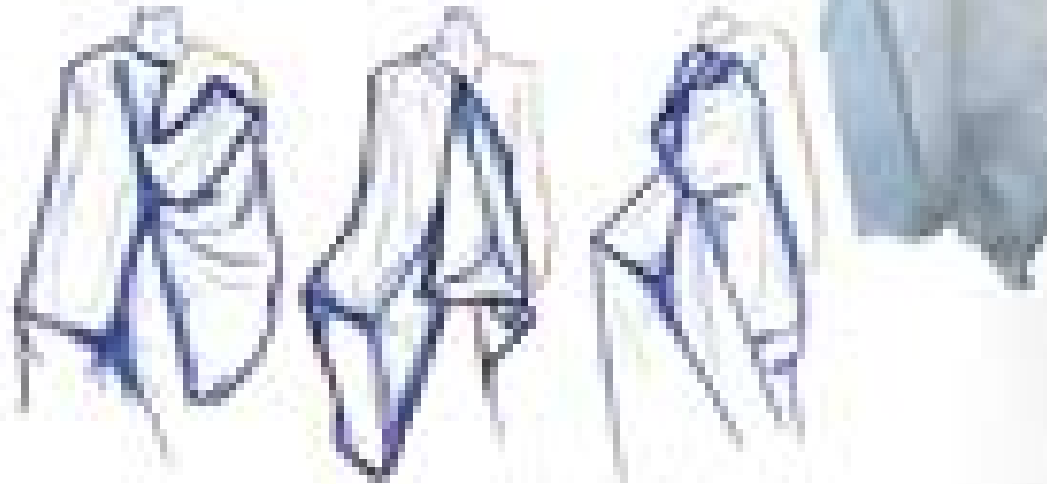
Development Board



Prototype Experiment

Development Board

Each additional vertex in the space is subjected to an experiment to fill the space, and the sleeve of the shirt falls to varying degrees due to the position of the filling.



Development Board



The extra spatial relationship between the upper and lower parts of the body

I split the extra space formed by the shirt between the upper and lower body of the human body. Correspondingly, I have also made adjustments to the method of contraction.



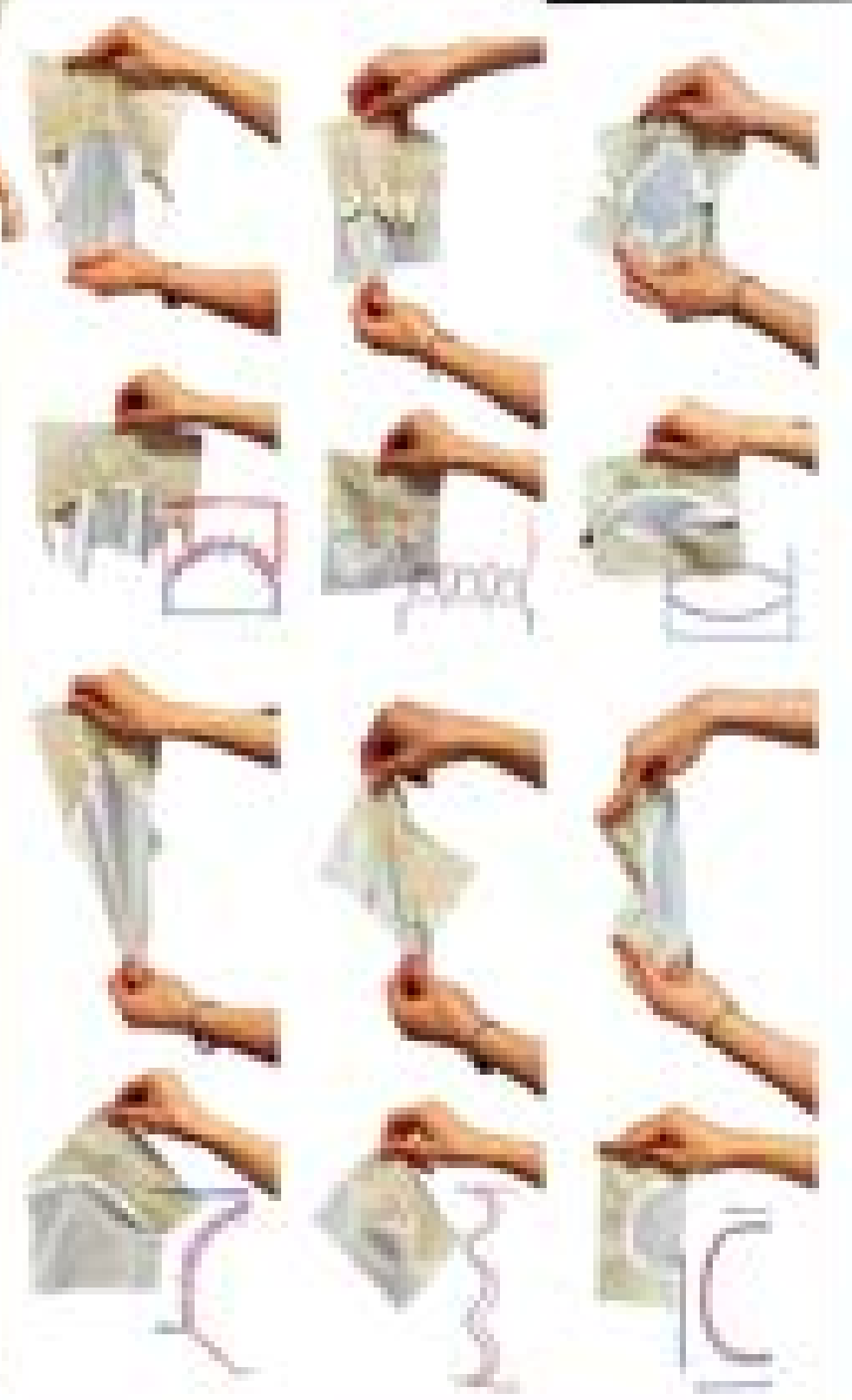
Chapter 3

When I sleep, I often wrap myself tightly with a blanket, and this subconscious habit can bring me extreme comfort and security.



This may be related to the memories of my childhood when my mother tightly wrapped me in a blanket, making me feel a sense of belonging. Based on this warm childhood spatial memory, I attempted to modify the calico fabric by replacing the wrinkled parts with knitted fabric to find and recreate my sense of belonging.

Chapter 3



Research Board





Jersey Fabric Space 1

I conducted a series of stretching experiments on jersey fabrics using my body, and based on the test results, I divided the jersey fabric sheets to form an additional space protruding from the human body. The characters moved along the additional space after sewing, forming a large number of natural downward folds during human activity.

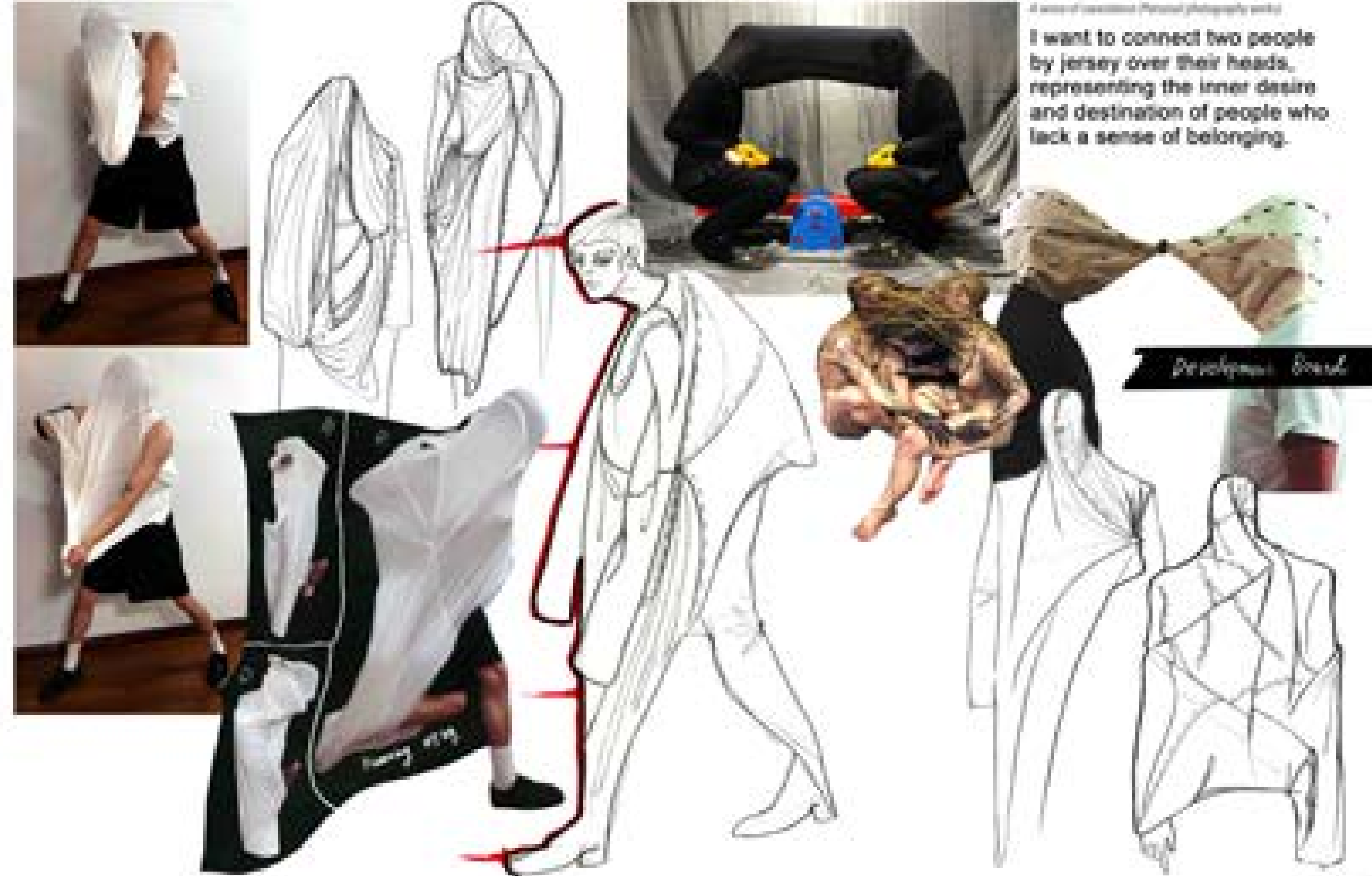


DEVELOPMENT

Jersey Fabric Space 2



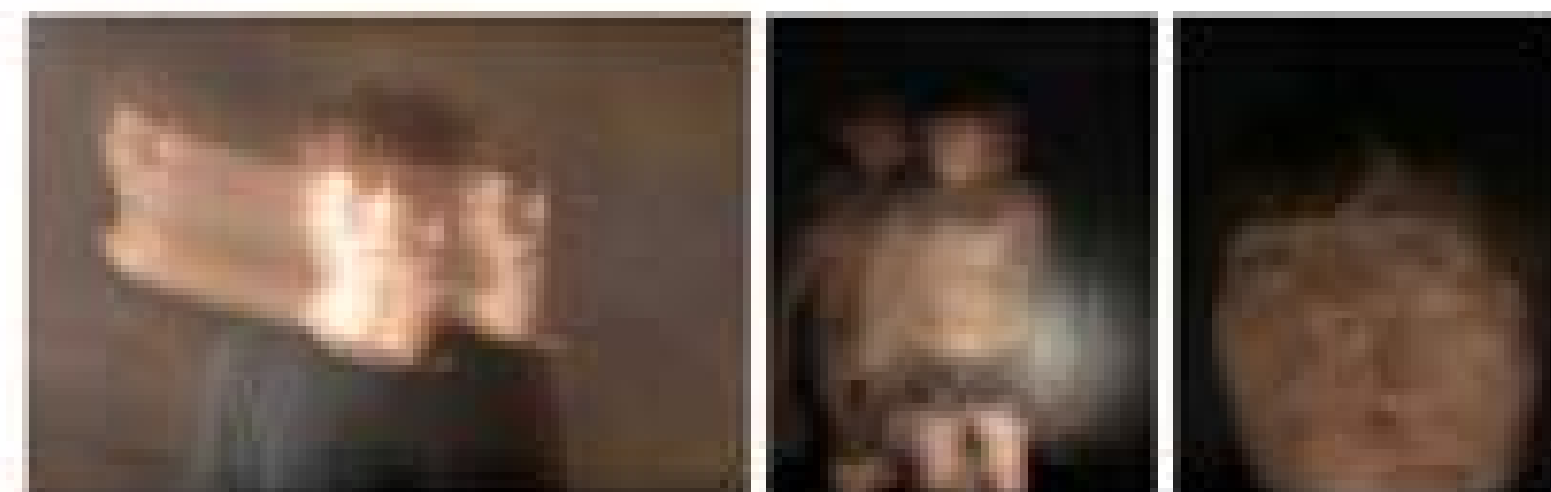
Jersey Fabric Space 3



I want to connect two people by jersey over their heads, representing the inner desire and destination of people who lack a sense of belonging.

Color & Fabrics

Development Board



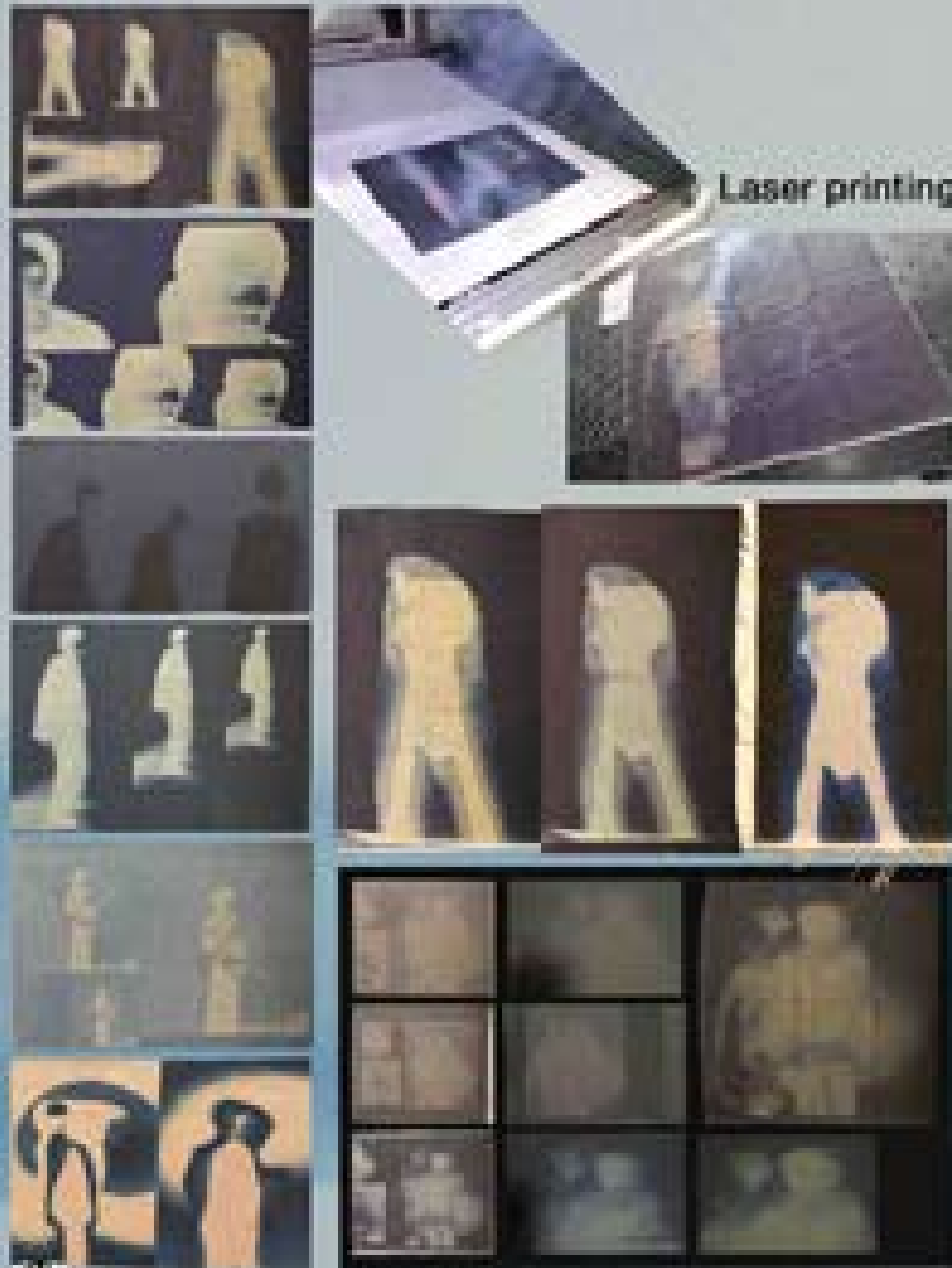
I look for inspiration for colors from old photos from the past. As the dust covers the years, old photos gradually turn yellow, and the fading ink forms blue marks. The gradual weakening of the sense of belonging is like a process of color changing from dark to light.

Printing

Development Board



I use time-lapse photography to capture some of my current state of mind, and by adjusting the exposure and contrast, I create a subtle atmosphere for the characters, like a blurry photo shrouded in dust in memories.

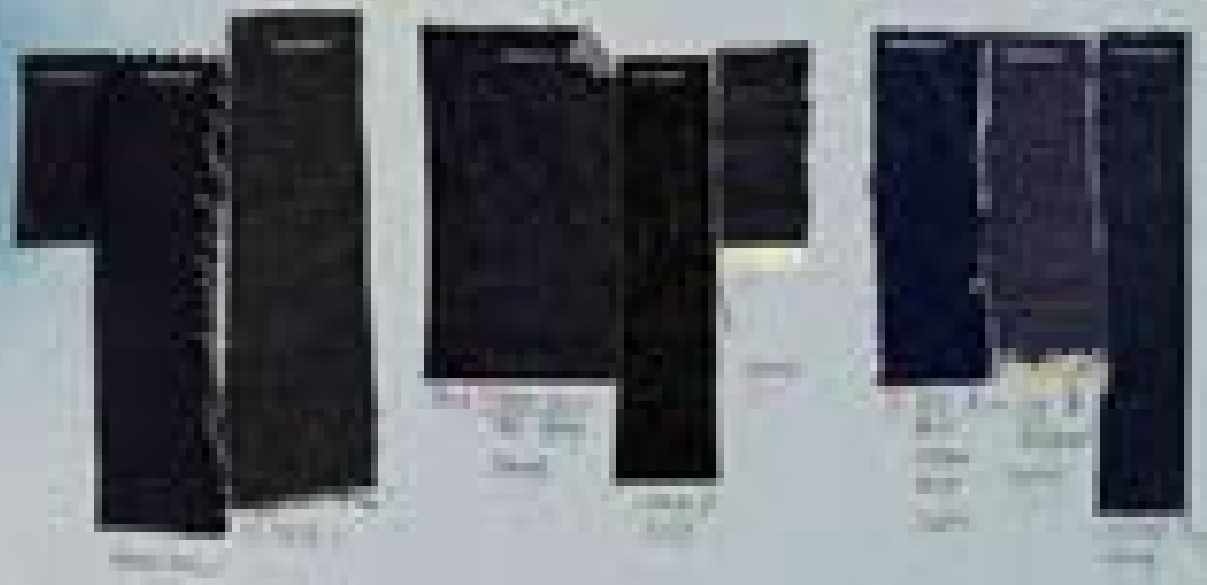


Laser printing



Digital printing

Another way for people to gain a sense of belonging is to integrate into the environment or group that suits them. I often fantasize about going back to my childhood room in the photo, when the timeline becomes stronger and covers me, at which point I gain the strongest sense of belonging. On the contrary, when I leave, my sense of belonging gradually disappears. Therefore, I choose to use denim of different depths combined with laser printing technology to express the overlap of memory and the interweaving of light and shadow.



Development Board



Line-up



Photography



Look Book





Photography



Look Book





Photography



Look Book





Photography



Look Book





Photography



Look Book

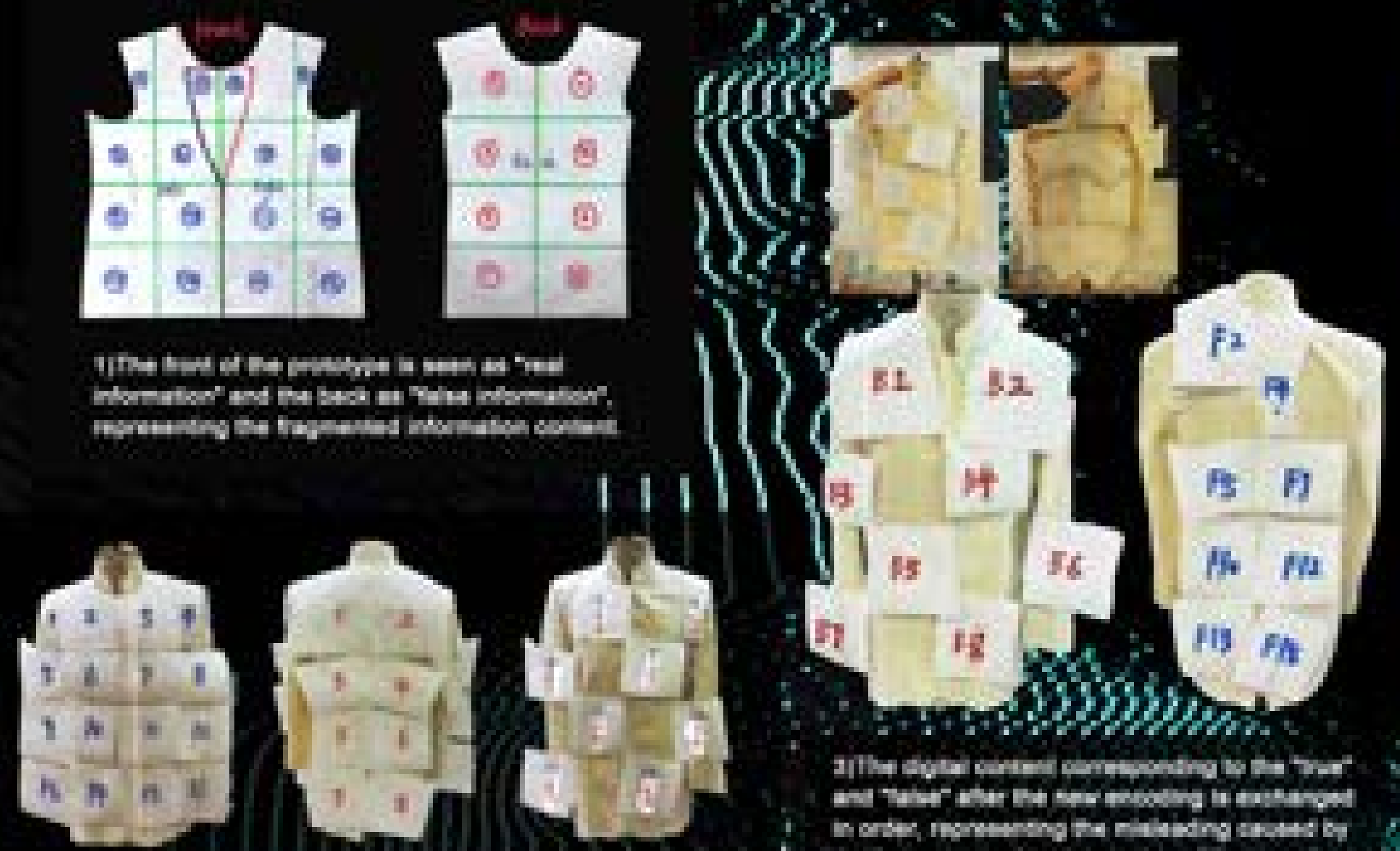


ECHO



Echoes of the Digital Labyrinth Inspired by Carl Newport's "Digital Minimalism," he considers how the digital torrent reshapes our way of life and values. The purpose of this project is to remind people to critically evaluate the influx of digital information and its impact on our daily lives, inspiring people to approach the digital world more cautiously and insightfully.

Experiment 1: Fragmentation of information leads to misleading.

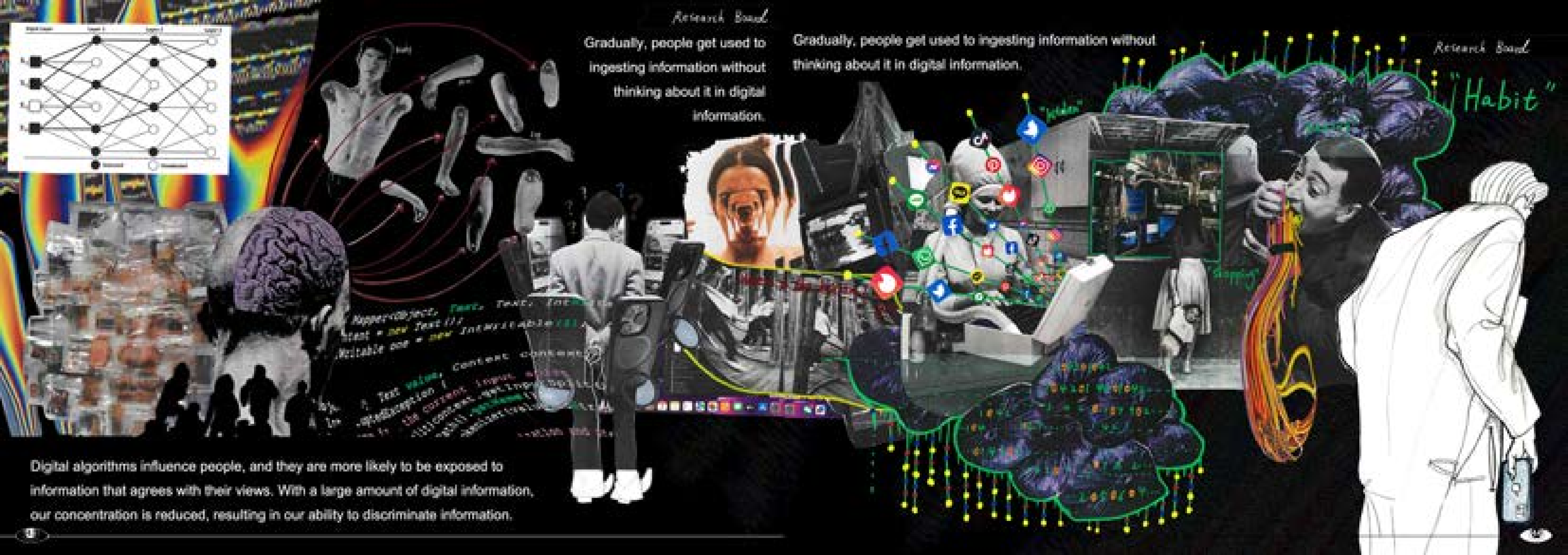


1) The front of the prototype is seen as "real information" and the back as "false information", representing the fragmented information content.

2) "True" in order to remove "1, 3, 5, 6, 8, 11, 14, 16"

3) The digital content corresponding to the "true" and "false" after the new encoding is exchanged in order, representing the misleading caused by the frequent combination and modification of fragmented digital content today.





Research Band

Gradually, people get used to ingesting information without thinking about it in digital information.

Gradually, people get used to ingesting information without thinking about it in digital information.

Research Band

"Habit"

Digital algorithms influence people, and they are more likely to be exposed to information that agrees with their views. With a large amount of digital information, our concentration is reduced, resulting in our ability to discriminate information.

Experiment 2: "Reimagining the Neckline: Forms of Deception"



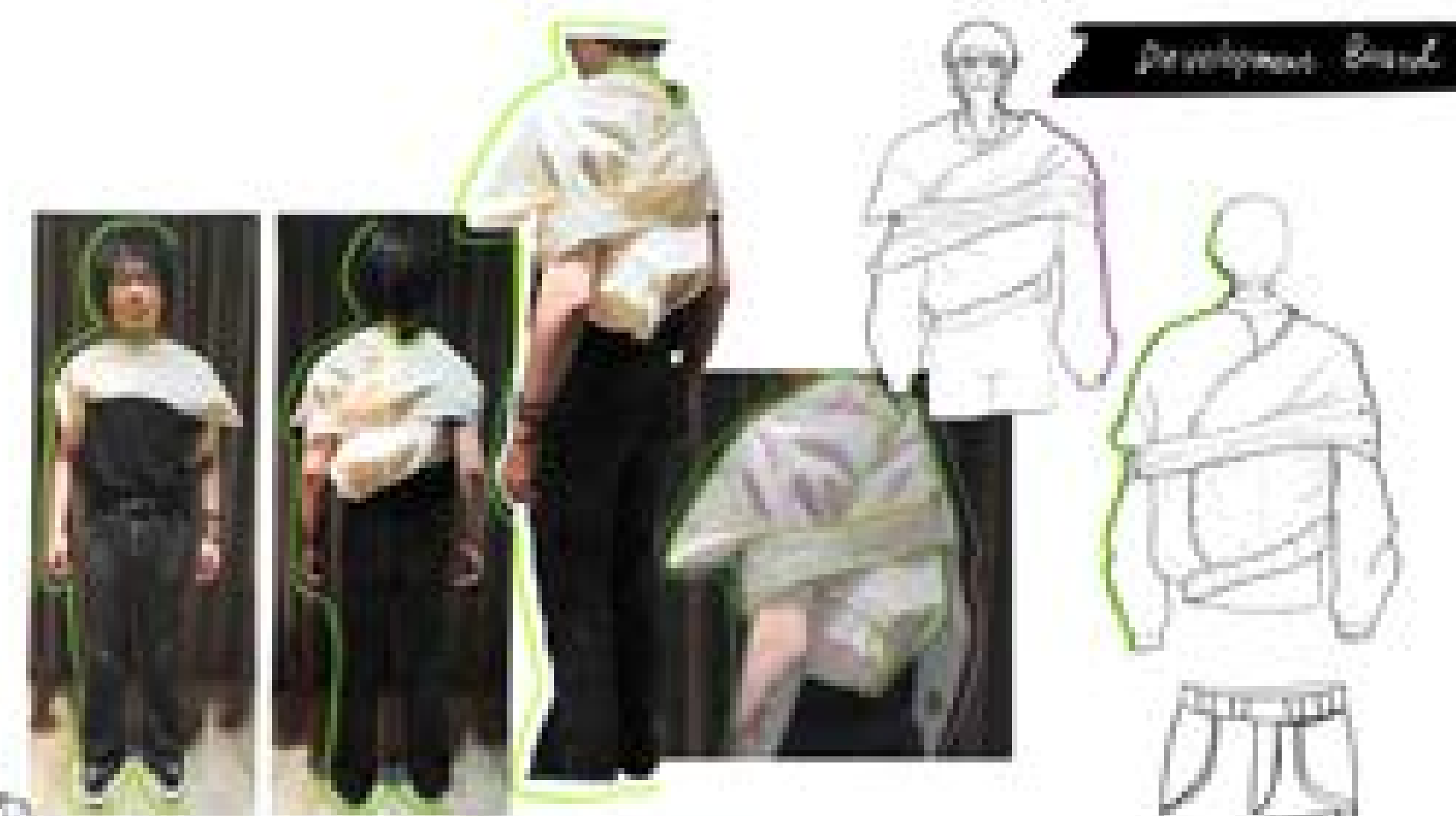
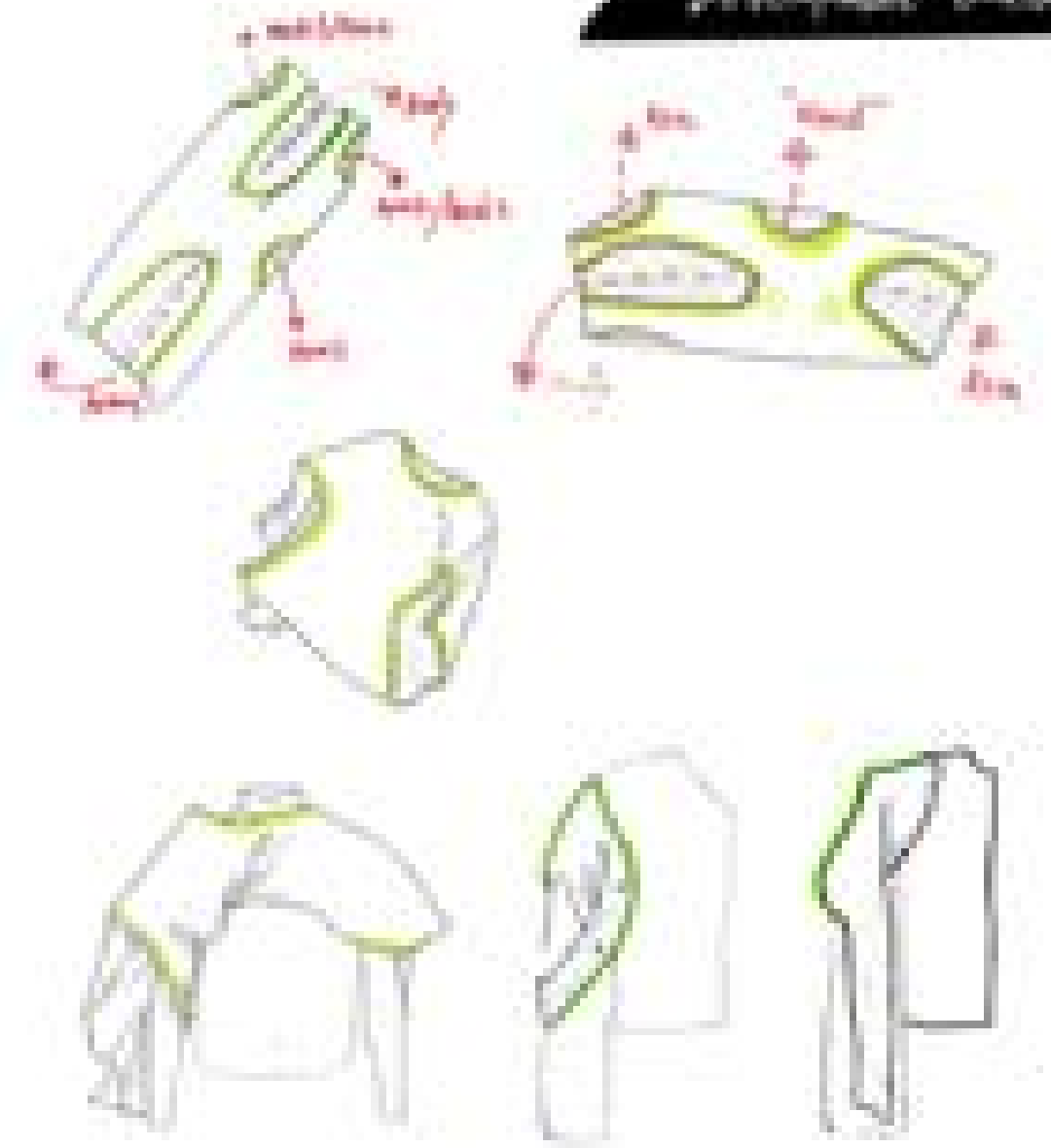
The collar position of the plate is changed to make the experimental clothing become a misleading information body



The viewer rotates counterclockwise, treating each potential opening as a neckline or sleeve, a wearable possibility for the body.



Development Board



Experiment 3: True or False, The Deceptive Blend.

Cut the front and back panels into eight pieces, and mix the 'true and false information' by rotating them. While maintaining a symmetrical left-right design, preserve some wearable human body features that carry specific symbolic or guiding thoughts. For instance, keep a semblance of sleeve panel structures while creating an asymmetrical form, resulting in a center of information that is difficult to discern as true or false, heavily influenced by interventions.

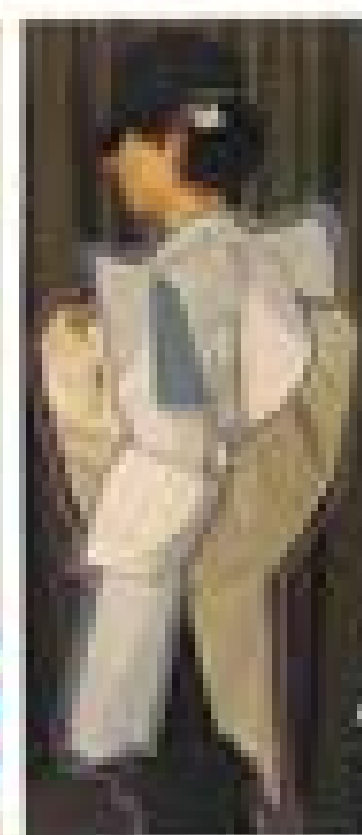
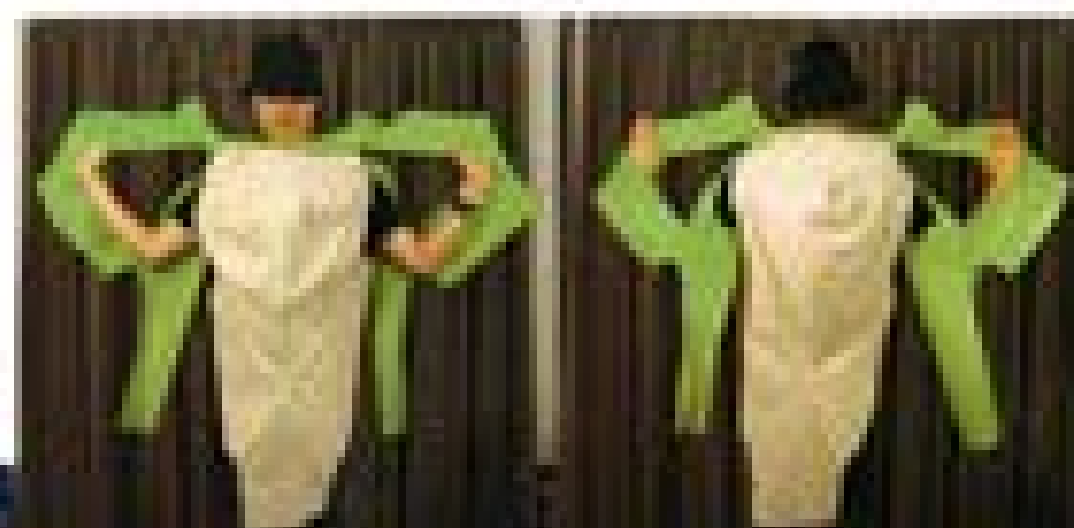


Development Board

Development Board



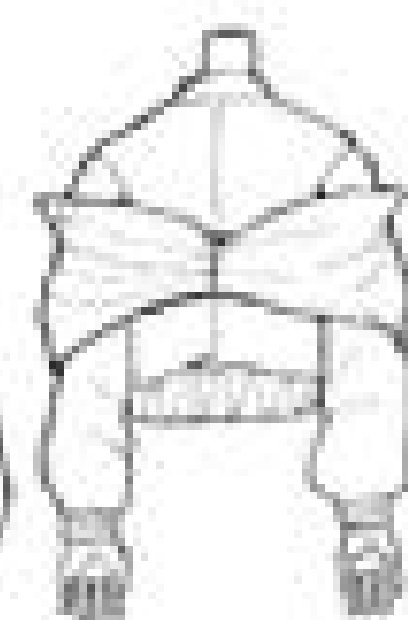
Possibility of collar structure



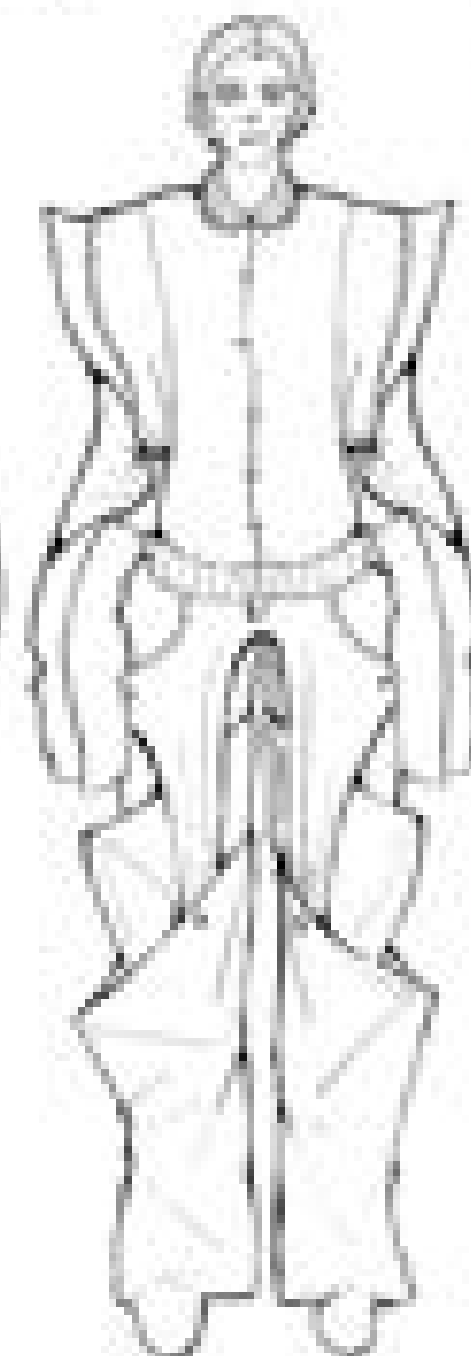
Development Board



In the normal state, when the "Information body" is worn on the body, because the partial wearing mode of the sleeve is retained, the audience can choose to wear the sleeve or let the structure on both sides of the costume naturally hang down on the side of the body, forming a structural fragment surrounding the human body.

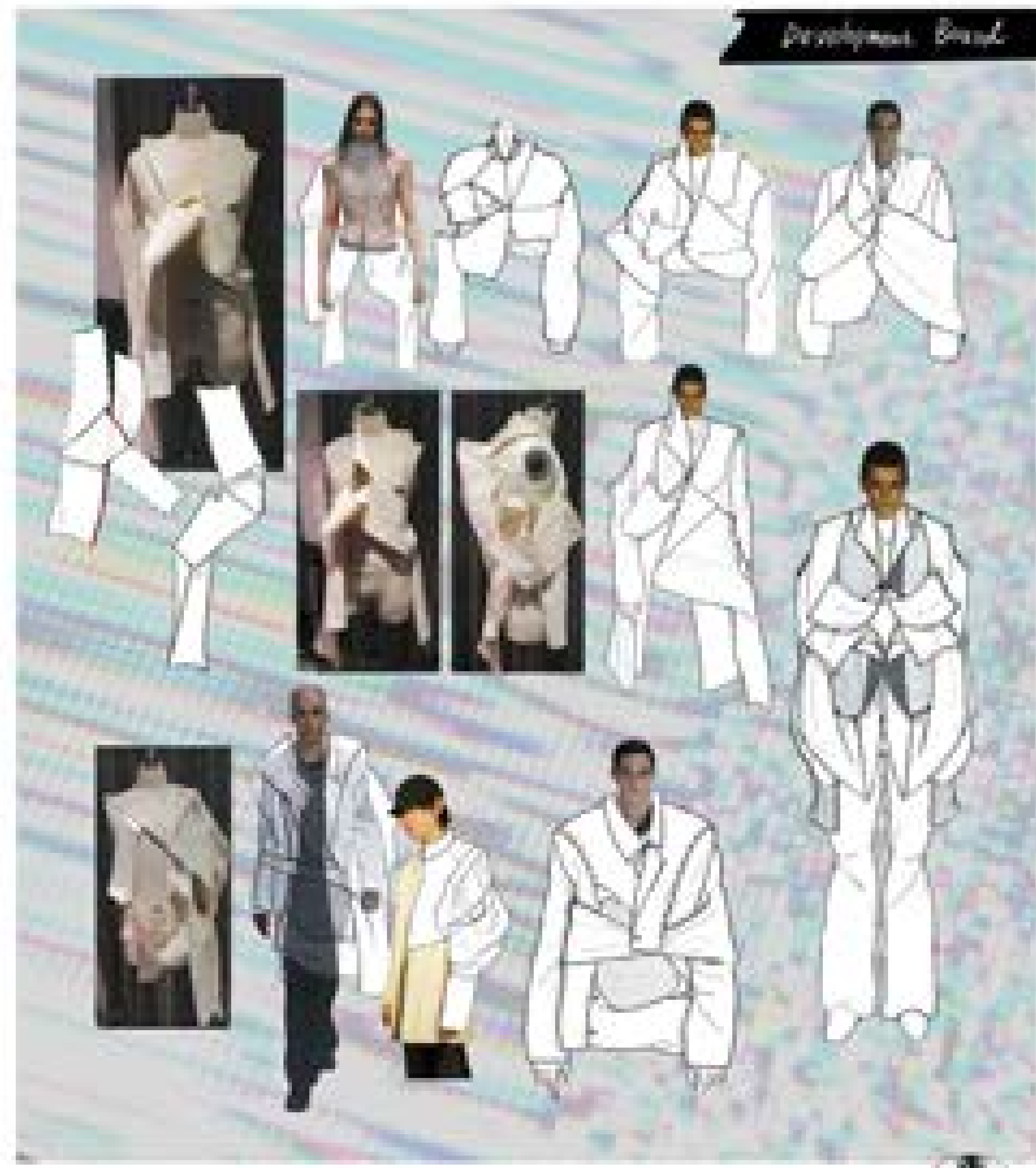


Development Board





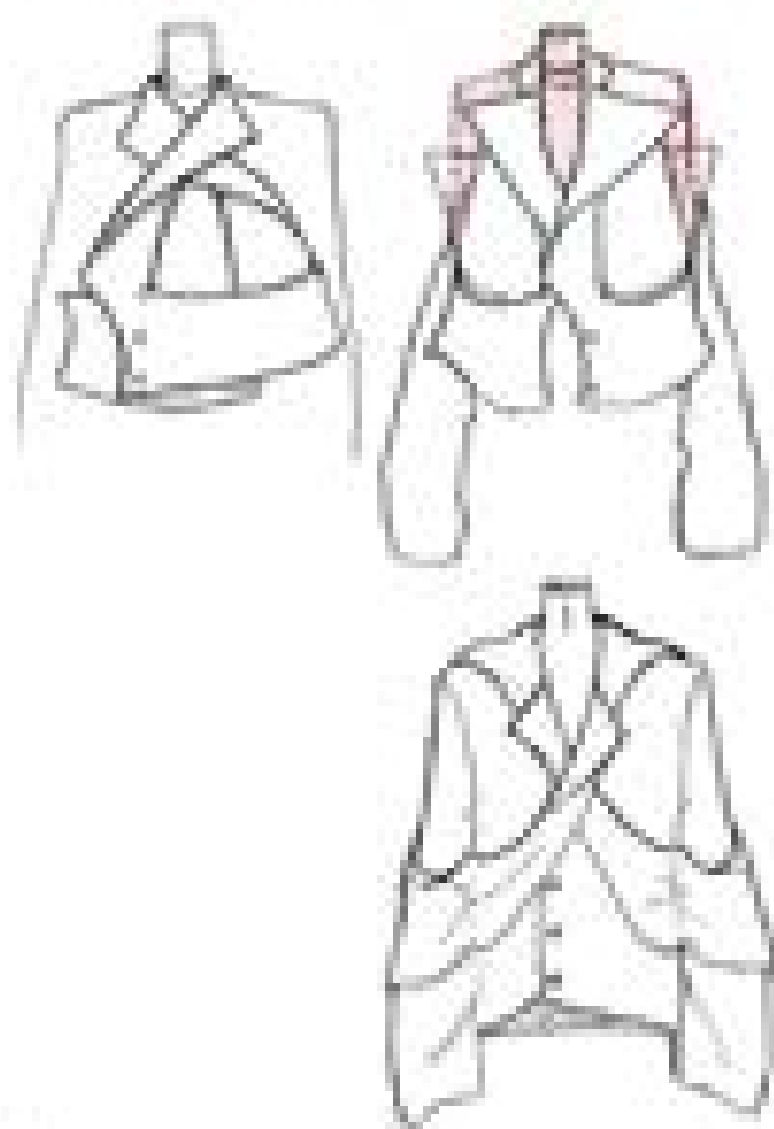
Development Board



Development Board



The cross structure of the garment



Development Board



By crossing left and right to form a raised twist, creating a space based on the surface of the human body.



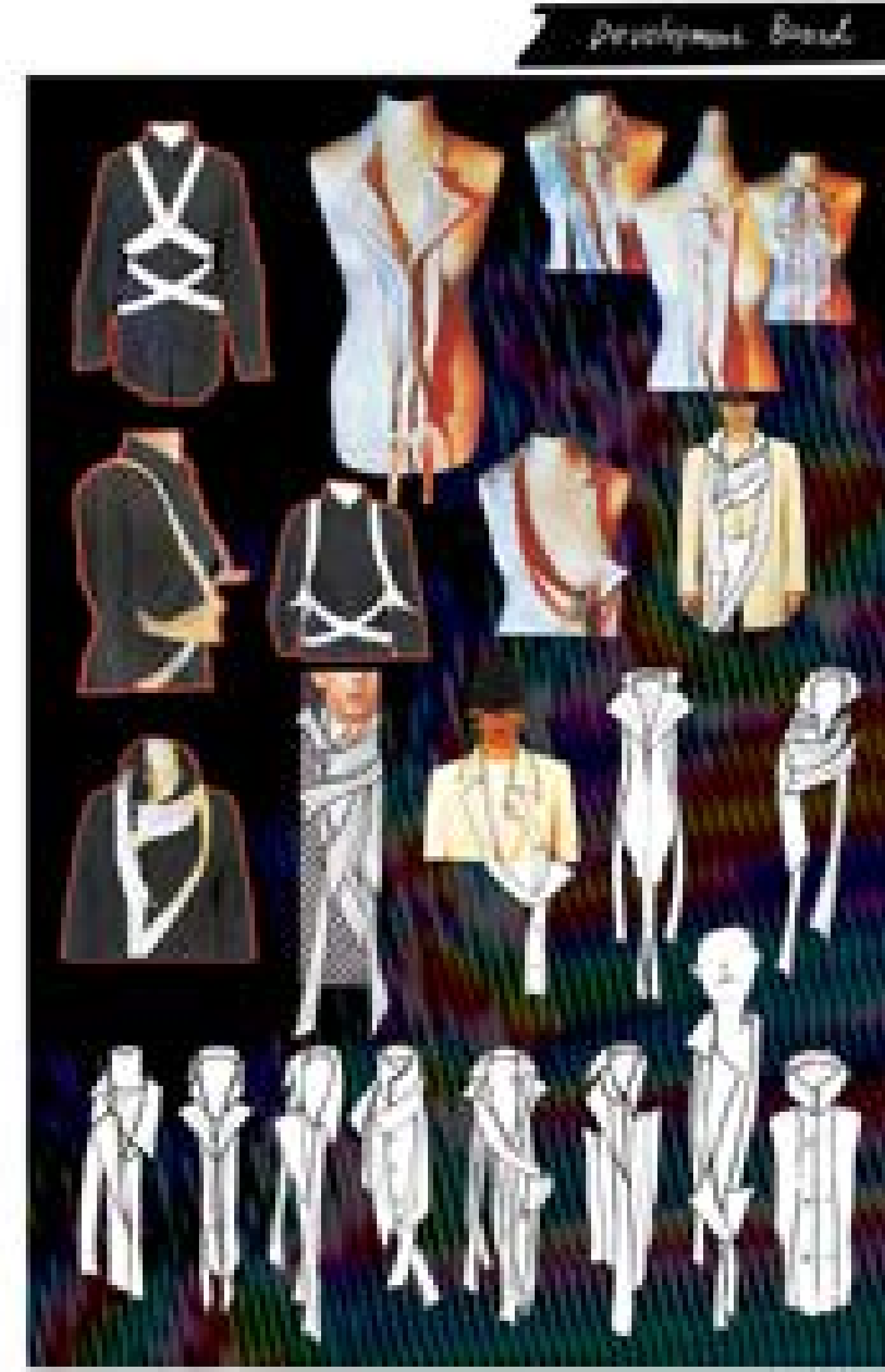
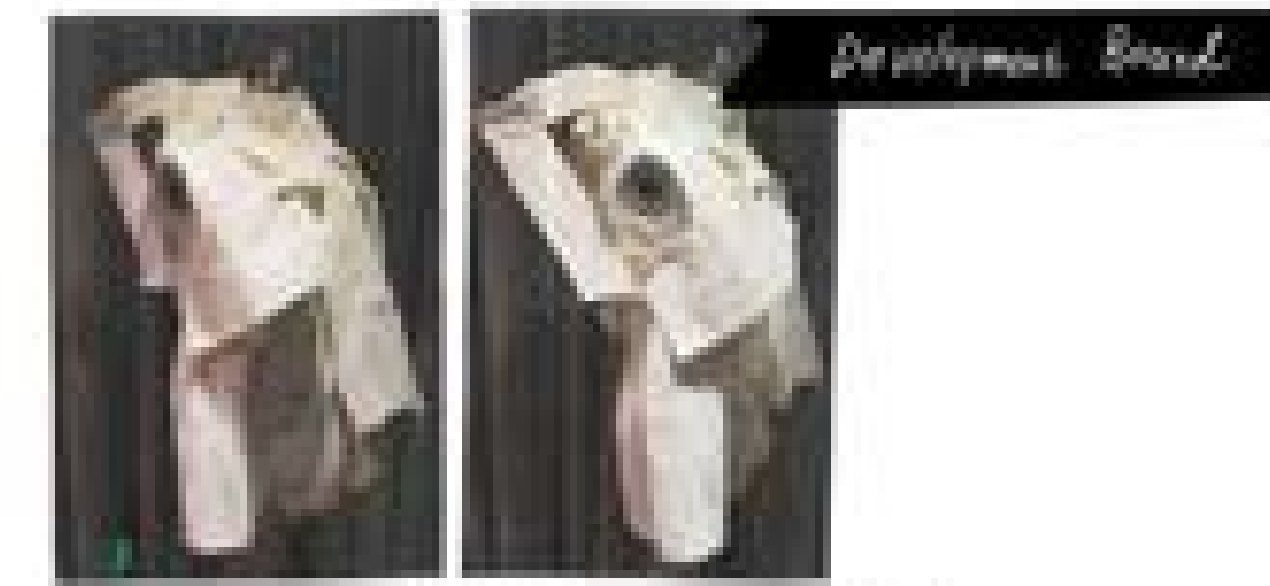
Development Board

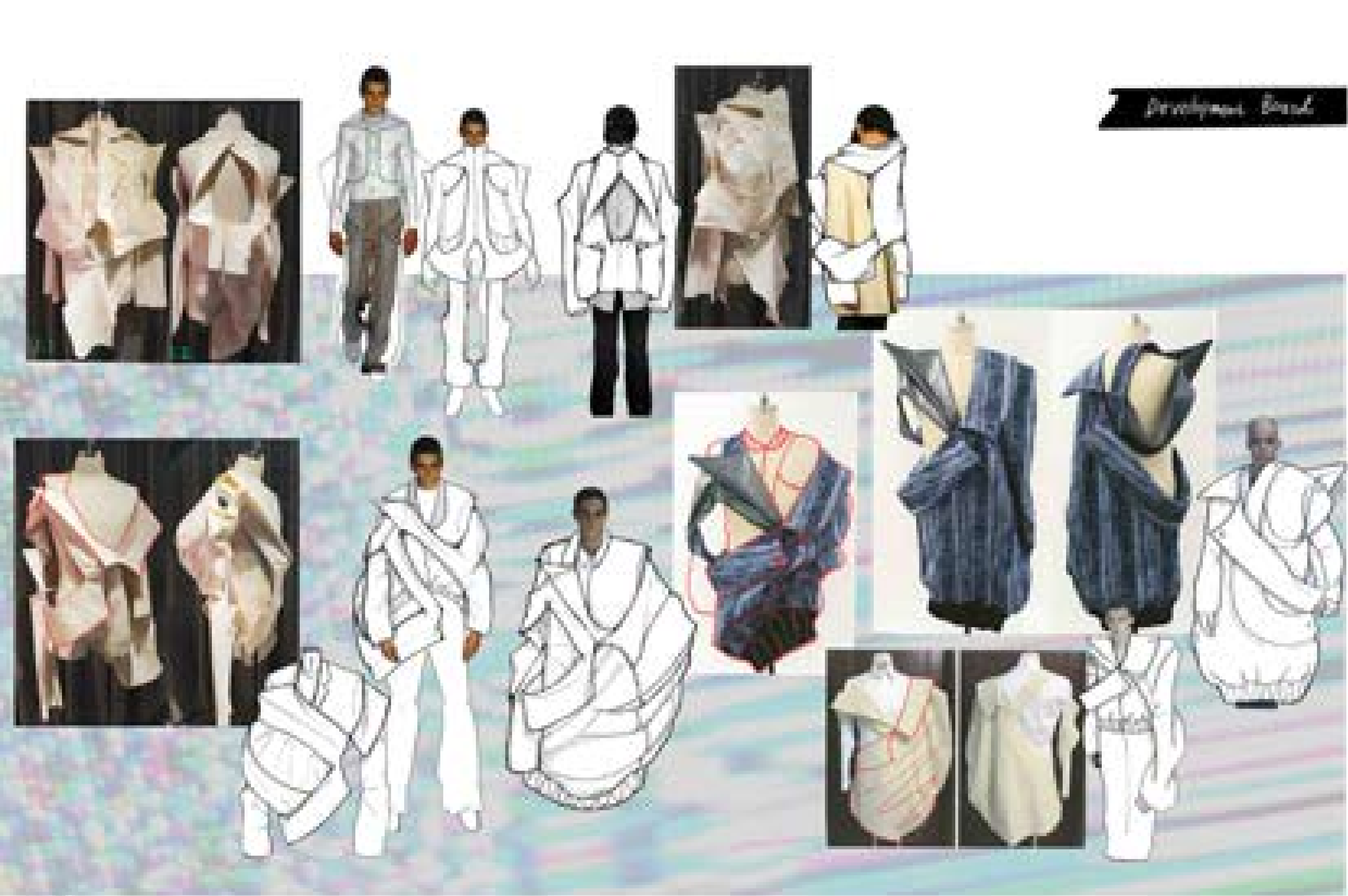


Different bulging structures were cut, and I combined some structures with a sense of volume and some folded structures. Because I was trying to create a menwear version based on the men's bomber jacket.

I added a long sleeve with a backpack structure to the hollowed place as an inner match.





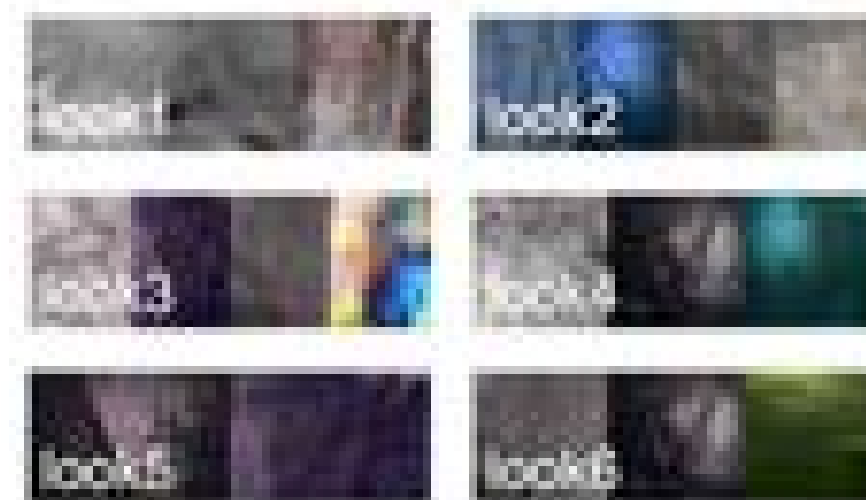




In this digital age, people are attracted by its colourful forms and need to remember to maintain the necessary distance from this digital content. I used digital content to discover the different light reflected by his chip at different angles to capture and combine different colours. Inspired by this, I collected many fabrics with shiny materials and combined them with other "information bodies" to create a digital worldview.



Line-Up



Line-Up





Development Board



Line - by





LOOK 1 - Look Book



Photography



Photography





Photography

LOOK 3 - Look Book



LOOK 4 - Look Book



Photography



LOOK 5 - LOOK BOOK

